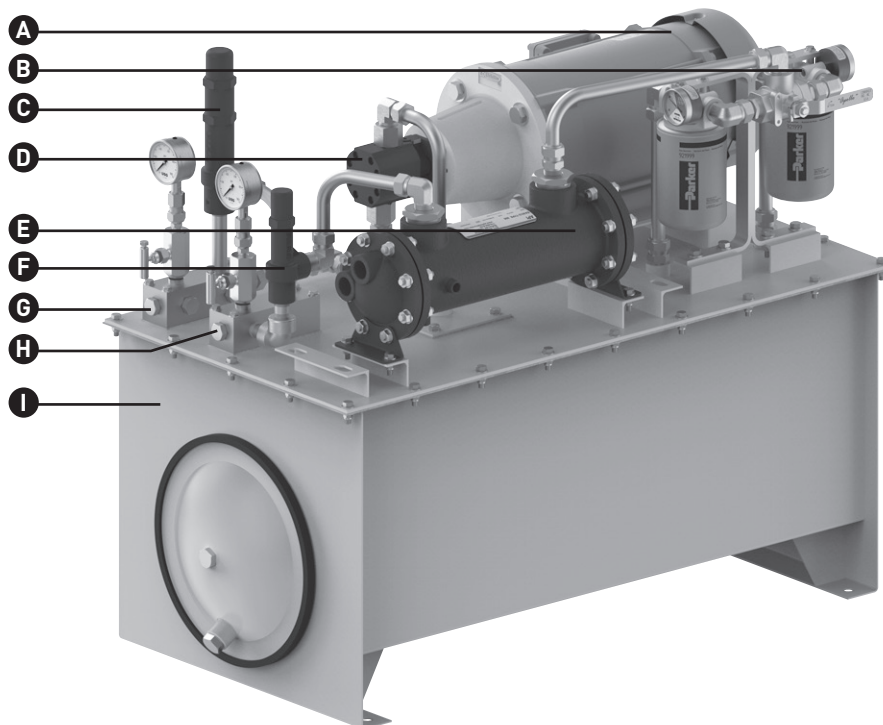


- A – Electric motor
- B – Filter Assembly*
- C – Pump protection valve
- D – Pump
- E – Heat exchanger
- F – Back pressure regulator
- G – Barrier fluid outlet
- H – Barrier fluid inlet
- I – Reservoir



Product Description

API 682 Plan 54 utilizes an external source to provide a clean pressurized barrier fluid to a dual pressurized mechanical seal with minimal leakage across the primary sealing interface into the process stream. The GS 54 global standard system is a pre-engineered design to provide a best-practice solution to the overly complex design process between supplier and customer significantly reducing specification and delivery timescales.

Performance Capabilities

- Temperature: -20° to 180°F/-29° to 82°C (design)
20° to 110°F/-7° to 43°C (ambient)
- Pressure: 917 psig/63 barg (design)
50 to 667 psig/3.5 to 46.0 barg (operation)
- Reservoir size: 30 gallons/113 liters (nominal)
- Footprint: L x W x H: 39.5" x 21.125" x 32.625" /
1001 mm x 536 mm x 841 mm

Design Features

- Best practice design to deliver clean, cooled, and filtered barrier fluid for optimal mechanical seal performance and centrifugal pump up time
- Assured differential pressure, circulation rate and seal-generated heat removal during pump operation and stand-by
- Safeguards against the toughest environments and provides full containment of VOCs for zero-emission control

- Streamlined design to minimize footprint and obstruction
- Design modularity and specified component flexibility
- Quick delivery with lead times to meet or exceed your needs

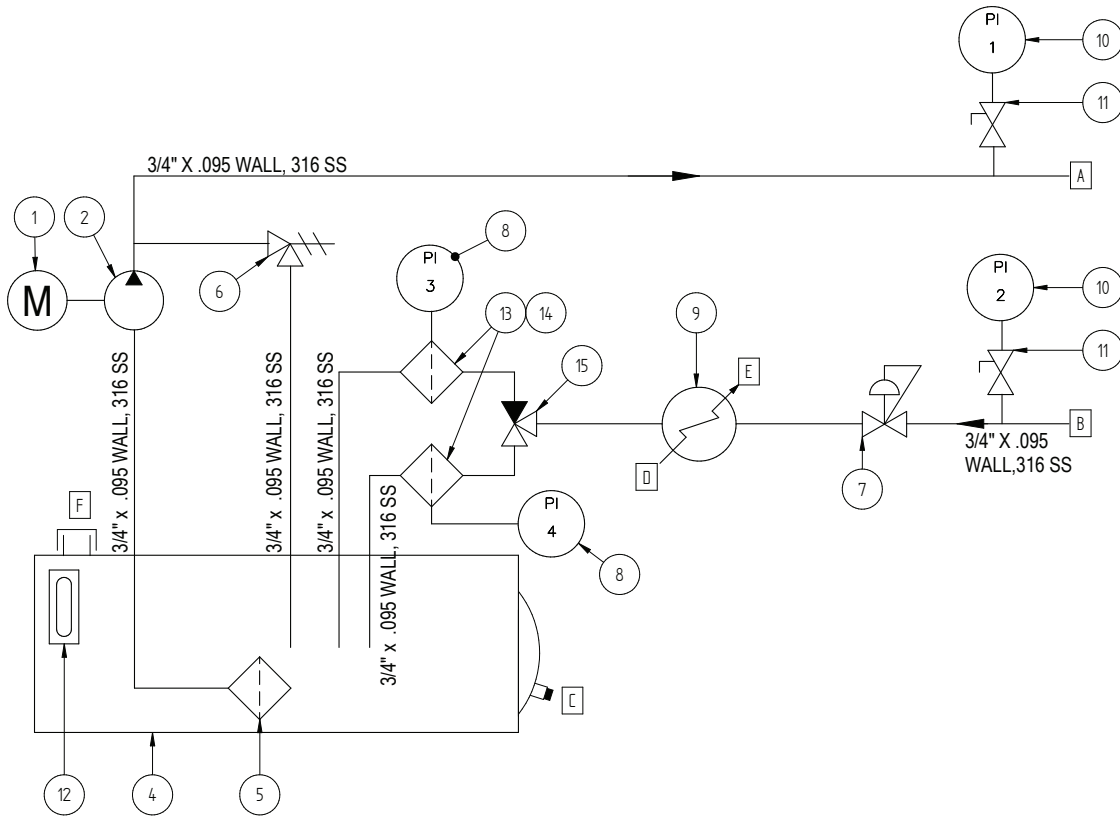
The GS 54 global standardized Plan 54 seal support system is a pre-engineered design that is already certified for regional qualifications. By providing clear component description and simplified selection criteria, customers receive an improved and faster process of doing business. The GS 54 is designed to deliver high reliability with long-term low cost of ownership.

Materials of Construction

Seal Components	Materials
System assembly	Tank 304 SS/tube and fittings 316 SS/carbon steel
Motor	3 hp 3/60/230-460, 1800 RPM, UL/CSA XP Div1 Class 1 Gr. C & D 3 kW 3/50/400, 1500 rpm, ATEX EEx-d IIB T4 IP55
Pumps	4.5 gallons per minute
Filter	10 µm spin-on filters with gauge
Pressure gauge	2-1/2" Dial, Bourdon Tube, 1/4" NPT, SS movement, glycerin-filled
Heat exchanger	Shell and tube ≥ 20,000 BTU/hr / 5.8 kW
Pressure control valve	1/2" NPT spring operated, CS/SS
Pressure safety valve*	NPT spring operated set at 817 psig/56.3 barg
Level gauge	5" level gauge with thermometer

*Region specific

GS 54 Typical Arrangement



Shown with dual-filter configuration.



North America
United States of America
Tel: 1-847-967-2400

Europe
United Kingdom
Tel: 44-1753-224000

Latin America
Brazil
Tel: 55-11-3371-2500

Middle East & Africa
United Arab Emirates
Tel: 971-481-27800

Asia Pacific
Singapore
Tel: 65-6518-1800

If the products featured will be used in a potentially dangerous and/or hazardous process, your John Crane representative should be consulted prior to their selection and use. In the interest of continuous development, John Crane Companies reserve the right to alter designs and specifications without prior notice. It is dangerous to smoke while handling products made from PTFE. Old and new PTFE products must not be incinerated. ISO 9001 and ISO14001 Certified, details available on request.