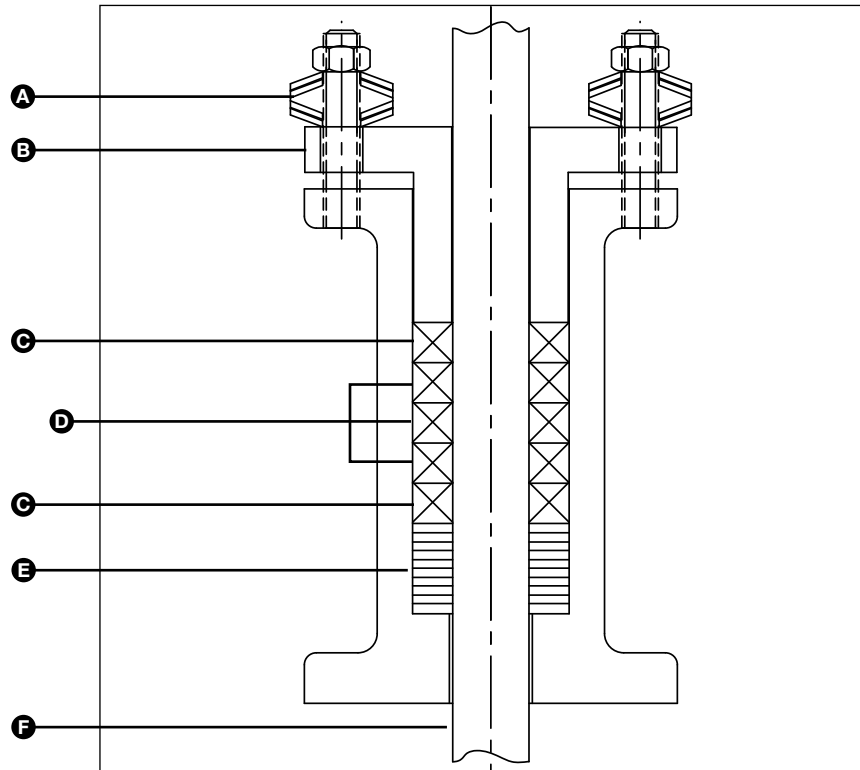


LIVE-LOAD

VALVE STEM PACKING

- A – Belleville Springs
- B – Gland Follower
- C – End Rings
- D – Sealing Rings
- E – Spacer Bushing
- F – Shaft/Stem



Minimal Gland Adjustments Required

Benefits

- Reduce maintenance cost
- Control emissions
- Self adjusting
- Equalized loading
- Reduced number of rings required for deep stuffing boxes
- Ideal for valves in remote or hard to reach locations



Industries Served

- Chemical processing
- Fossil fuel
- General industry
- Nuclear power
- Oil and refinery
- Petrochemical
- Power generation
- Pulp and paper
- Utilities

Design Features

- Trained technical support: sales/service engineers provide training programs, on-site surveys, and supervise installations.
- Design and application engineering support
- Computerized live-load program: calculates proper load data for disc spring selection, configuration, and gland nut torque.
- Optimum packing materials: utilizes die-formed Crane-foil™ packing rings for longer sealing life, resulting in less corrosion in the box and less leakage in the valve. Highest quality braided graphite or carbon fibers serve as wiper rings and anti-extrusion rings. High compressive strength graphite spacer.
- Belleville springs: maintain packing compression above the minimum sealing pressure as packing relaxes and wears.
- Nuclear certifiable materials: materials can be certified to meet demanding nuclear service purity levels of low chloride, fluoride, halogens, sulfur and embrittled metals.

NOTE: For additional application or product information contact John Crane.

LIVE-LOAD

VALVE STEM PACKING

Materials of Construction

SEAL COMPONENTS	STANDARD MATERIALS	
	Commercial	Nuclear
Belleville Springs	17-7PH Stainless Steel	17-7PH Stainless Steel
Packing Rings	Crane-foil 235 A*, B**, or C*** Crane-foil 267 A*, B**, or C*** Crane-foil 267W A*, B**, or C***	N261 A*, B**, or C*** N267 A*, B**, or C*** N267W A*, B**, or C***
Braided End Rings	1625G 1627 G58 G58I	N1625 N1635
Spacer	9004 Graphite	9005 Graphite

*A = Endless

**B = Single Split

***C = Double Split

NOTES: Refer to John Crane EPS and VPS for additional valve packing specifics. Contact John Crane for more information concerning the live-loading of your rotating equipment.



North America
United States of America
Tel: 1-847-967-2400
Fax: 1-847-967-3915

Europe
United Kingdom
Tel: 44-1753-224000
Fax: 44-1753-224224

Latin America
Brazil
Tel: 55-11-3371-2500
Fax: 55-11-3371-2599

Middle East & Africa
United Arab Emirates
Tel: 971-481-27800
Fax: 971-488-62830

Asia Pacific
Singapore
Tel: 65-6518-1800
Fax: 65-6518-1803

If the products featured will be used in a potentially dangerous and/or hazardous process, your John Crane representative should be consulted prior to their selection and use. In the interest of continuous development, John Crane Companies reserve the right to alter designs and specifications without prior notice. It is dangerous to smoke while handling products made from PTFE. Old and new PTFE products must not be incinerated. ISO 9001 and ISO14001 Certified, details available on request.